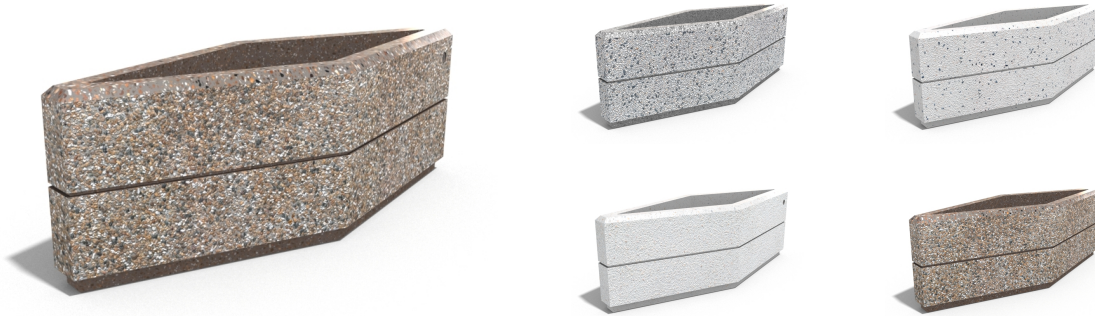


# Creating Brands of the Future



## CONCRETE PLANTER 229 exposed aggregate

Model in the product range of concrete planters by Encho Enchev - ETE in the elegant rhomboid shape. The flower pot is made of high-performance concrete and an aggregate of natural marble or granite stones. The particles that make up the aggregate are precisely defined in size and can be combined in different colors. With the modern techniques of processing the aggregate structure a surface with a characteristic relief is created. A special protective coating is applied on the embossed surface. The innovative solution is decorated with a delicate, horizontal chann ...

**396.00 €**

**Diameter:** 130.0 cm

**Length:** 45.0 cm

**Height:** 45.0 cm

**CIRCLE** Stainless Steel



81 AISI 3

**BASE** Natural Marble aggregates



42 Brown



51 White



52 Scatte



53 Grey



AR / VR



WEBSITE