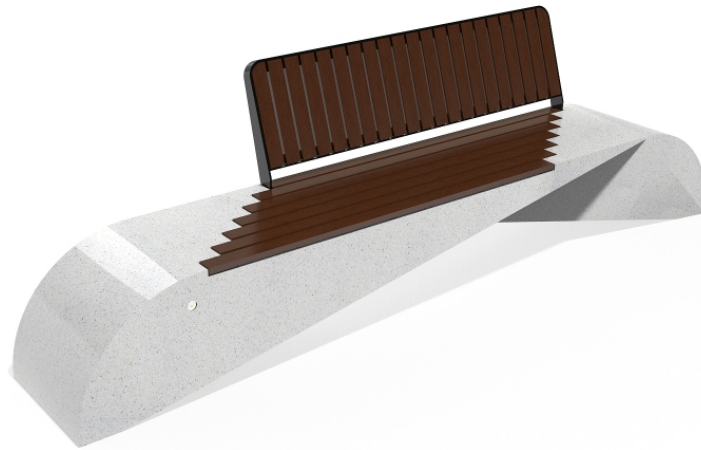
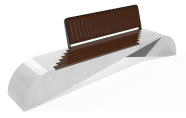




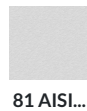
## CONCRETE BENCH 248 PR Resysta polished aggregate



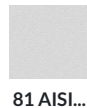
**BRACKET**  
Steel:



**CIRCLE**  
Stainless Steel:



**BOLT** Stainless  
Steel:



Bench with backrest from the product range of concrete benches by Encho Enchev - ETE with a characteristic design, giving it individuality and style. The bench is made out of high-performance reinforced fiber concrete and polished aggregate. The marble and granite stones that form the aggregate structure are natural and have the opportunity for dif ...

**Diameter:** 295,0 cm

**Length:** 61,0 cm

**Height:** 84,0 cm

**2.834,00 €**



AR / VR



WEBSITE