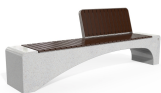




CONCRETE BENCH 247 ER Resysta exposed aggregate



BRACKET
Steel:



RAL 702...

CIRCLE
Stainless Steel:



81 AISI...

**BASE Natural
Marble
aggregates:**



22 Brown



31 White



34 Scatter



35 Grey

Bench with backrest made out of high-performance reinforced fiber concrete and natural aggregate. The aggregate structure consists of natural marble or granite stones, which can be combined in different colors. The surface is completely polished. The metal components making up the seat and back of the bench are made of stainless steel. The seating ...

Diameter: 230,0 cm

Length: 56,0 cm

Height: 84,0 cm



AR / VR



WEBSITE



1.414,00 €



AR / VR



WEBSITE