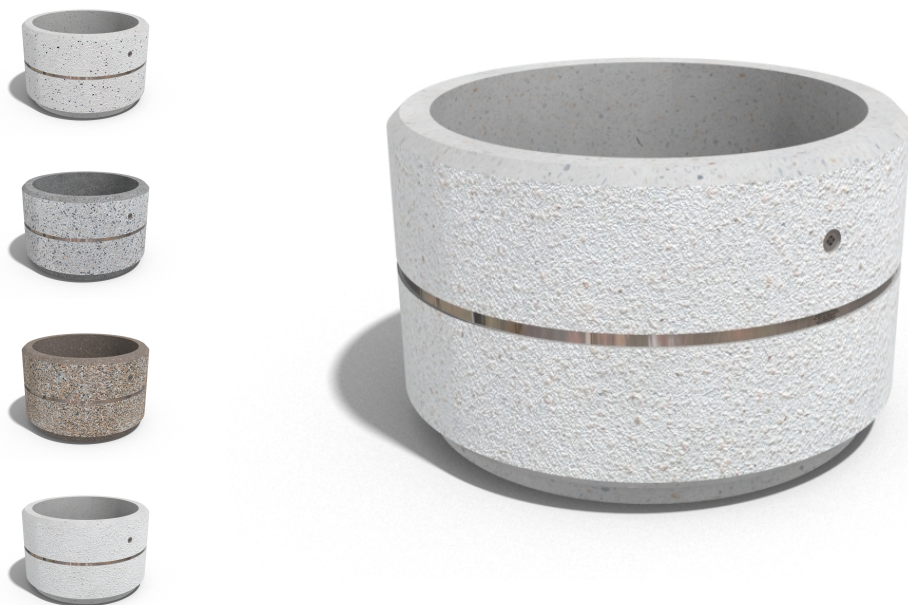
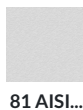




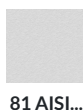
ROUND CONCRETE PLANTER 17 exposed aggregate



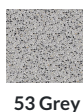
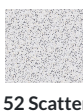
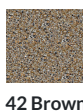
Logo Stainless
Steel:



Ring Stainless
Steel:



Base Natural
Marble
aggregates:



Model from the series of round concrete planters by Encho Enchev-ETE, in which the designers have offered a great ratio between height and diameter, turning every park, square or alley into a masterpiece of art. The flowerpot is made out of high-performance concrete and natural embossed aggregate. The aggregate structure is composed of natural marb ...

Diameter: 80,0 cm

Length: 80,0 cm

Height: 50,0 cm



AR / VR



WEBSITE



451,00 €



AR / VR



WEBSITE